

# VITRUM

GLASS GROUP

[WWW.VITRUM.CA](http://WWW.VITRUM.CA)

#### Head Office & Fabrication Facility

9739 201 Street Langley, BC  
V1M 3E7 Canada

Tel 604 882 3513  
Fax 604 882 3510  
TF 888 391 1166

#### Alberta Distribution Centre

6 - 4315 61 Avenue SE, AB  
T2Z 1Z6 Canada

Tel 403 984 6573  
Fax 403 984 6576  
TF 888 391 1166



*IdeaScapes*  
Glass - Coatings - Paint



**GUARDIAN**  
SUNGUARD  
ADVANCED ARCHITECTURAL GLASS



**SAINT-GOBAIN**  
GLASS

©2015 Vitrum Glass Group. Vitrum, SonicGuard and the Vitrum Glass Group logo are registered trademarks of Vitrum Industries Ltd.

Capabilities and product offerings are subject to change without notice. For the most up to date information please visit [www.vitrum.ca](http://www.vitrum.ca).

Vitrum Glass Group strives to meet all of your glass fabrication needs. For sizes outside of these minimums and maximums please contact one of our highly knowledgeable Customer Services Representatives.

Front Photo: YVR, Vancouver BC. Cover Photography by Stephen Nyran.



# SONICGUARD

SonicGuard™  
Sound Control Laminated Glass

# SonicGuard™

## SAFETY & SECURITY WITH SUPERIOR SOUND CONTROL

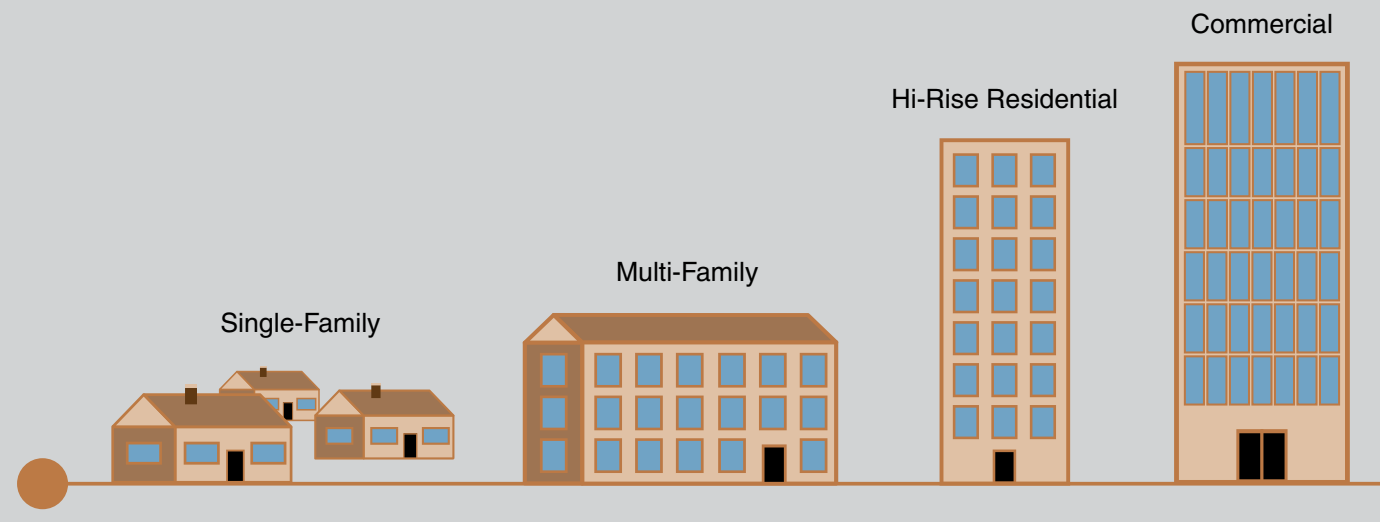
All laminated glass offers improved acoustic performance, however SonicGuard has a specifically engineered PVB interlayer that provides a superior level of sound control. SonicGuard is comprised of two or more panes of glass bonded together using our exclusive SonicGuard PVB interlayer.

Combining different glass thicknesses and SonicGuard interlayers not only enhances acoustical performance, but gives you the safety, security, seismic, ballistic and blast resistance already offered by laminated glass.

SonicGuard is available in many glass thicknesses and types. It can be combined with decorative options including silk-screened ceramic frit. SonicGuard can be used monolithically or be manufactured into an insulated glass unit paired with Vitrum's other glass products. SonicGuard performs its best when installed in a high-performance frame that is capable of dampening sound transmission.



## SonicGuard A SOUND SOLUTION FOR ALL APPLICATIONS



### SonicGuard Fabrication Capabilities

Maximum size	102" x 200" x 60mm	Interlayer thickness	
Minimum size	6" x 6"	0.090"	
		0.060"	
		0.030"	

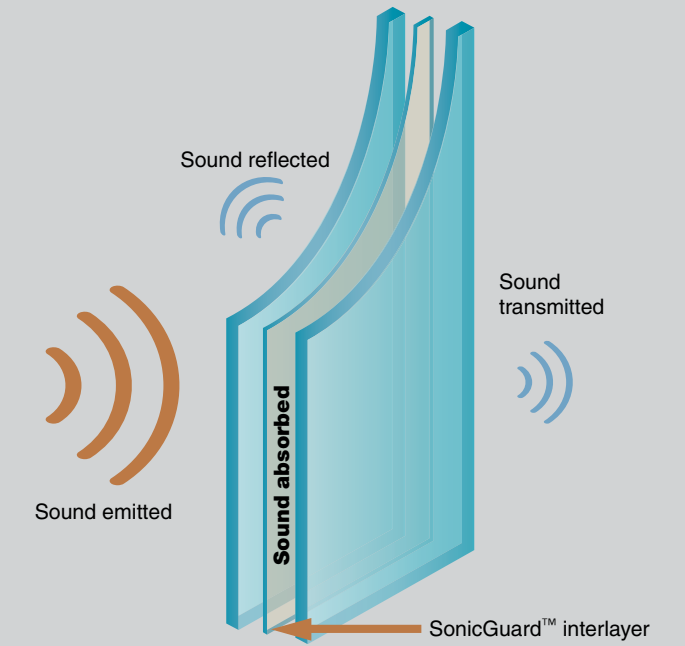
### STC - Sound Transmission Class

The STC is a single number rating derived from individual transmission losses within a specified test frequency. It was created to provide a single number rating for interior building partitions that are subjected to sound from speech, television, radio and other mid to high frequency noise sources. The higher the number, the better the noise isolation. The STC rating is calculated over the frequency range of 125 to 4000 hertz, by comparing the measured sound transmission loss to a reference contour curve. The STC rating may only be assigned to specimens tested in a laboratory setting. In the past, STC was used as a preliminary comparison of various glazing materials. OITC has replaced STC for comparing glazing materials. (for more information on STC see ASTM E90 and ASTM E413)

### OITC - Outdoor-Indoor Transmission Class

The OITC rating is calculated in accordance with ASTM E1332. It was created to provide a single number rating for facades (exterior walls) and facade elements (windows and doors) that are subjected to transportation noise (aircraft, trains, automobiles, and other low to mid frequency noise sources). The higher the number, the better the noise isolation. The OITC is calculated over the frequency range

of 80 to 4000 hertz. The OITC is calculated by subtracting the logarithmic summation of the transmission loss values from the logarithmic summation of the A-weighted transportation noise reference spectrum. An OITC rating is best assigned to specimens tested in the laboratory.



## MONOLITHIC LAMINATED SONICGUARD

### 0.030" Interlayer Thickness

Total Thickness	Glass Make-up	STC	OITC
6mm (1/4")	6mm SonicGuard	35	31
10mm (3/8")	10mm SonicGuard	38	35
12mm (1/2")	12mm SonicGuard	39	36
15mm (5/8")	15mm SonicGuard	41	38

## INSULATED GLASS UNITS WITH SONICGUARD LAMINATED GLASS

### 0.030" Interlayer Thickness

Outboard Glass	Airspace	Inboard Glass	STC	OITC
6mm SonicGuard Lami	16mm	4mm Glass	36	28
6mm SonicGuard Lami	16mm	6mm Glass	40	31
6mm SonicGuard Lami	16mm	8mm Glass	42	32
8mm SonicGuard Lami	16mm	4mm Glass	39	31
8mm SonicGuard Lami	16mm	6mm Glass	41	33
8mm SonicGuard Lami	16mm	8mm Glass	42	31
8mm SonicGuard Lami	16mm	10mm Glass	44	35
8mm SonicGuard Lami	20mm	10mm Glass	46	37
12mm SonicGuard Lami	16mm	8mm Glass	43	34
12mm SonicGuard Lami	16mm	10mm Glass	44	36
8mm SonicGuard Lami	16mm	12mm SonicGuard Lami	48	37
8mm SonicGuard Lami	20mm	12mm SonicGuard Lami	49	38

SonicGuard combines the safety and security of laminated glass with the added benefit of superior noise reduction, creating a more peaceful working or living space.

To learn more about SonicGuard and how it can help you create a quieter and calmer working or living space, please call 1.888.391.1166 or visit our website at [www.vitrum.ca](http://www.vitrum.ca).

Disclaimer: The data and information enclosed are based on samples tested in an independent laboratory and reflect the STC and OITC performance for the glass make-ups listed (glass only, no frame). This information has been compiled with care and to our best knowledge and belief are true and accurate, results are however not guaranteed for all applications.